

Faraway-Frustum: Dealing with Lidar Sparsity for 3D Object Detection using Fusion

Haolin Zhang*, Dongfang Yang*, Ekim Yurtsever*, Keith A. Redmill and Ümit Özgüner

Abstract—Learned pointcloud representations do not generalize well with an increase in distance to the sensor. For example, at a range greater than 60 meters, the sparsity of lidar pointclouds reaches to a point where even humans cannot discern object shapes from each other. However, this distance should not be considered very far for fast-moving vehicles: A vehicle can traverse 60 meters under two seconds while moving at 70 mph. For safe and robust driving automation, acute 3D object detection at these ranges is indispensable. Against this backdrop, we introduce faraway-frustum: a novel fusion strategy for detecting faraway objects. The main strategy is to depend solely on the 2D vision for recognizing object class, as object shape does not change drastically with an increase in depth, and use pointcloud data for object localization in the 3D space for faraway objects. For closer objects, we use learned pointcloud representations instead, following state-of-the-art. This strategy alleviates the main shortcoming of object detection with learned pointcloud representations. Experiments on the KITTI dataset demonstrate that our method outperforms state-of-the-art by a considerable margin for faraway object detection in bird’s-eye-view and 3D.

I. INTRODUCTION

3D/Bird’s eye view (BEV) object detection is a critical task for many robotics applications. Existing lidar-based methods show good performance for close to medium range objects. However, a closer look at the state-of-the-art exposes an inherent problem: learned pointcloud representations do not generalize well with an increase in sparsity. This is not a surprising phenomenon. At a range greater than sixty meters, lidar pointcloud sparsity reaches a point where even humans cannot discern object shapes from each other. For example, in KITTI 3D/BEV object detection benchmark [1], the state-of-the-art 3D object detection performance is remarkable. But when these high performing models face objects that are located at 60 meters and beyond, mean average precision drops to almost *zero*. We believe this is an important issue for automated driving. For instance, detecting faraway objects can offer more time for the automated vehicle to make better decisions.

3D/BEV object detection for faraway objects is challenging, and state-of-the-art (SOTA) lidar-based detectors [3], [4], [5], [6], [7] do not perform well for this task as shown in Fig. 1. We believe this is caused by sparsity and near-random scattering of the few points obtained from faraway objects. Learned representations from close to medium range objects do not generalize to faraway cases, and since SOTA

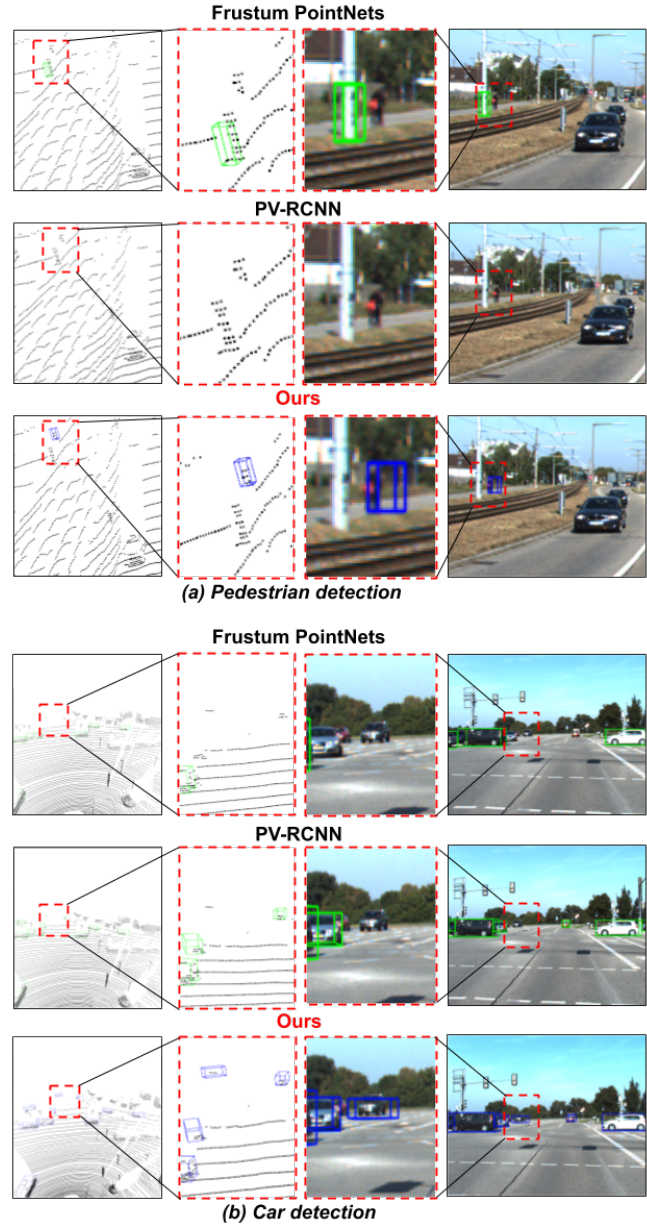


Fig. 1. Example 3D detection results of faraway objects from the KITTI test set. (a) Pedestrian detection. *Top row*: Frustum PointNets [2], which is based on fusing multiple modalities (RGB and pointcloud). *Middle row*: PV-RCNN [3], which is based on only pointcloud. *Bottom row*: Our proposed method. (b) Car detection. Same arrangement as in (a).

*Equal contribution

Authors are with the Department of Electrical and Computer Engineering, The Ohio State University, OH 43210, USA. Contact: [zhang.10749, yang.3455, yurtsever.2, redmill.1, ozguner.1] @osu.edu

approaches are primarily deep neural networks, they cannot learn the representations of faraway cases.

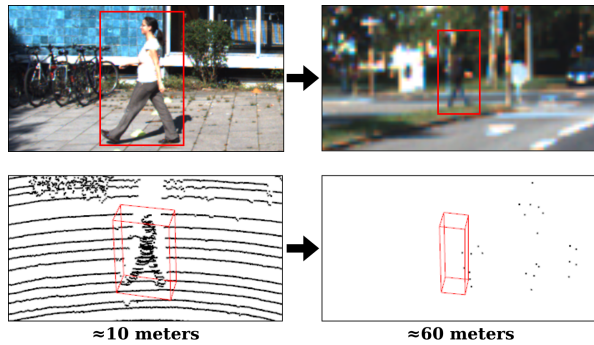


Fig. 2. Learned pointcloud representations do not generalize well with an increase in sparsity. This problem does not translate to the 2D image domain though, as the shape of objects do not change drastically with an increase in depth.

RGB-pointcloud fusion is a common strategy [2], [8], [9], [10], [11], [12] to increase 3D object detection performance. For example, some works [2], [12] focus on using 2D detection results to generate frustum-based search spaces in pointclouds. As shown in Fig. 2, a faraway object in the RGB image domain usually contains around 400 pixels, which can be easier to recognize with a mature 2D detector. As such, a fusion-based approach can be a good candidate for faraway object detection. However, even though the aforementioned studies use RGB imagery to boost detection performance, they still depend on solely learned pointcloud representations to localize objects in 3D.

In this work, we propose an alternative 3D/BEV detector, *Faraway-Frustum*, to address the problem of faraway object detection. We follow the idea of frustum generation but use clustering instead of a neural network to estimate object location in the cropped pointcloud for faraway objects. We still train a neural network to regress bounding box shape and depth. The overview of the proposed method is shown in Fig. 3. We first use 2D instance segmentation masks (or 2D bounding boxes) for each object in the RGB image space to generate frustums in the pointcloud space and find the corresponding lidar points for each object. Then, a pointcloud clustering technique is applied to estimate the 3D centroid of the object. By comparing the centroid with a faraway threshold, an object is determined to be treated as a faraway object or not. If so, a 3D bounding box is regressed by our Faraway Frustum Network (FF-Net) to the object based on the estimated centroid and frustum pointcloud. If it is not a faraway object, instead of clustering the raw pointcloud, learned representations are directly used for 3D box fitting, following SOTA.

To evaluate the proposed method, we conducted benchmarking experiments using the KITTI dataset [1]. In KITTI, the average number of lidar points for each faraway object (e.g. pedestrians over 60 meters and cars over 75 meters) is ten or less, which supports our motivation that an alternative approach is necessary for faraway objects instead of directly using pointcloud-driven neural network approaches. The experimental results demonstrated that our

method outperforms the SOTA methods on faraway object detection, which indicates that our method effectively fuses the RGB data with very sparse pointcloud. As shown in Fig. 1, our proposed method successfully detects faraway objects, where SOTA methods (fusion or pointcloud only) fail. Our main contributions can be summarized as follows:

- Introduction of a novel fusion strategy: depending solely on the 2D vision for object recognition and clustering frustum-cropped pointcloud data for 3D object localization.
- Showing that using clustering with cropped, very sparse raw pointcloud data is a better strategy than using learned representations for faraway 3D object detection. As shown in Fig. 2, within very sparse pointclouds, the shape of objects changes drastically and randomly. As such, using representations learned mostly from closer objects is not useful.
- Demonstrating state-of-the-art 3D object detectors’ failure with objects at a distance over sixty meters in the KITTI dataset. The proposed faraway-frustum approach outperforms SOTA with a significant margin.

II. RELATED WORK

In this section, we briefly review state-of-the-art 3D/BEV object detection methods. We divide them into two main categories: pointcloud only methods and RGB-pointcloud fusion methods. In the second category, we mainly discuss feature-based fusion and frustum-based fusion. We also discuss their performance of detecting faraway objects.

Pointcloud only methods. One way of processing pointcloud is based on voxels [4], [5], [3], [13]. Such methods first convert the pointcloud into voxel grids and then learn the representation of each voxel. 3D/BEV detection is achieved with the learned voxel representation. Alternatively, raw pointcloud data can be used directly utilizing PointNet-based architectures [14] and make 3D/BEV object detections [15], [16], [7]. These methods are robust for most objects. However, pointcloud only methods all have the difficulty of detecting faraway objects, because lidar points of faraway objects are too sparse to be voxelized and learned, leading to no detection result in most cases.

Feature-based Fusion. Feature-based fusion methods try to make the pointcloud data and the RGB data complement each other. One way is to fuse the information from pointcloud into RGB image. For example, [8] fuses the features from Region of Interest (RoI) in both 2D image and 2D depth map, and then conducts 3D box regression. MV3D [9] projects the lidar pointcloud to two-view image representations (Bird view and Front view). The features and information extracted from these two image representations and the RGB image are then fed into a region-based fusion network for 3D object detection. AVOD [10] firstly generates a BEV map from a voxel grid representation of the lidar pointcloud. The features extracted from both the BEV map and the RGB image are fused for 3D object detection through a first-stage region proposal network and a second-stage detector network. The main problem of these methods is the loss of 3D geometric information of lidar pointcloud

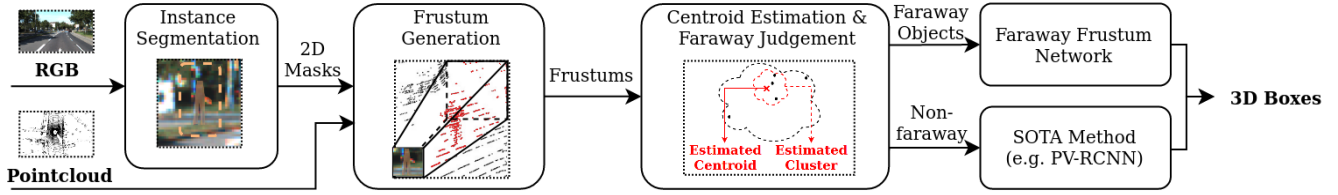


Fig. 3. Overview of the 3D/BEV object detection system based on our proposed method (*Faraway-Frustum*). It contains three main stages: frustum generation, centroid estimation, and box regression. First, the 2D object information (classification and 2D semantic mask) is extracted from the image by conducting instance segmentation, and then the 3D frustum is shaped by extruding the 2D semantic mask to the 3D coordinate system. Second, lidar pointcloud (red points) in the frustum are collected and clustered, and then the 3D object centroid is estimated. Finally, depending on the faraway judgment, the 3D bounding box is predicted by our Faraway Frustum Network or a state-of-the-art method.

because of using the pointcloud’s 2D representations, leading to some errors in locating small objects such as pedestrians. Feature-based fusion can also be achieved by fusing the information from image space into pointcloud. For example, [11] extracts the geometric features in 3D and color features in 2D from RGB-D images and then fuses them for 3D object detection. MVX-Net [17] fuses the RGB image and pointcloud point-wise or voxel-wise. The features extracted from the RGB image by a pre-trained 2D CNN are fused with the pointcloud in a voxel-based network to do 3D object detection. PointPainting [18] assigns the semantic feature to each lidar point by fusing the 2D detection result from the RGB image, thus achieving better results in pointcloud-based neural network detector. Since these approaches heavily rely on the pointcloud feature, they still can not generate good results for faraway objects with sparse lidar points.

Frustum-based Fusion. Frustum-based fusion methods use the detection results from 2D image to generate frustums for pointcloud, hence reducing the search space in 3D. An early and classic method is Frustum PointNets [2]. This method first generates a frustum for each object detected in 2D, then applies a PointNet-based approach to do instance segmentation and 3D box estimation in each frustum. Some work [19], [20] have improved the process of frustum generation by filtering out some background noise, and there is work focusing on changing the content of frustums. For example, Frustum ConvNet [12] generates a sequence of sub-frustums via sliding in the original 3D frustum. Frustum Voxnet [21] voxelizes parts of the frustum instead of using the whole frustum space, which offers more accurate representations around the area of interest. Some other researchers aimed to provide more fusion information. For example, one work [22] combines the pointcloud features in the frustum with the image features in the 2D bounding box as early-fusion and then apply a PointNet-based detector. Another work [23] fuses their own BEV detection results with 3D/BEV results from Frustum PointNets as late-fusion. These perform well for most objects. But unfortunately, for faraway objects with sparse lidar points, pure neural network based approaches cannot generalize well.

One recent work [24] achieved good 3D/BEV pedestrian detection results around 30 meters. In our work, we extend the range significantly, and detect pedestrians at 60 meters

and beyond, where most SOTA approaches completely fail.

III. PROPOSED METHOD

Algorithm 1: Faraway-Frustum(\mathbf{P} , \mathbf{I} , \mathbf{T} , z_{th})

Input:

- Lidar pointcloud $\mathbf{P} \in \mathbb{R}^{N,3}$.
- RGB image $\mathbf{I} \in \mathbb{R}^{H,W,3}$.
- Calibration matrix $\mathbf{T} \in \mathbb{R}^{4,4}$.
- Faraway object threshold $z_{th} \in \mathbb{R}$

Output:

- 3D object bounding box $\mathbf{B}_i \in \mathbb{R}^7$.
- Class id c_i .

Main algorithm:

$\{c_i, \mathbf{b}_i, \mathbf{M}_i, s_i\} = f_{\text{Mask R-CNN}}(\mathbf{I})$ ($i = 1, 2, \dots, n$) ;

foreach $i(1, 2, \dots, n)$ **do**

$\mathbf{P}'_i = f_{\text{Mask-frustum}}(\mathbf{M}_i, \mathbf{T}, \mathbf{P})$;
 $(x_i, y_i, z_i) = f_{\text{clustering}}(\mathbf{P}'_i)$;
if $z_i \geq z_{th}$ **then**
 $\mathbf{P}''_i = f_{\text{projection}}(\mathbf{P}'_i, x_i, y_i, z_i)$;
 $(z'_i, w_i, l_i, h_i, \alpha_i) = f_{\text{FF-Net}}(\mathbf{P}''_i, c_i)$;
 $\mathbf{B}_i = (x_i, y_i, z'_i, \alpha_i, w_i, l_i, h_i)$;
else

$\mathbf{B}_i, c_i = f_{\text{SOTA}}(\mathbf{P}, \mathbf{I})$;
end

end

An overview of our proposed method is shown in Fig. 3 and Algorithm 1. Our method takes both the RGB image and lidar pointcloud as input and outputs 3D/BEV bounding boxes \mathbf{B}_i with class id c_i . There are three main stages in our method: frustum generation, centroid estimation, and depth-refinement with box regression. Each stage will be illustrated in detail in the following subsections.

A. Frustum Generation

2D instance segmentation. 2D instance segmentation serves as the base of frustum generation. It takes an image as input and outputs the 2D object detection results containing 2D bounding boxes and semantic masks.

In this work, we use 2D instance segmentation framework Mask R-CNN [25] to obtain 2D object information $\{R_i\}$ from

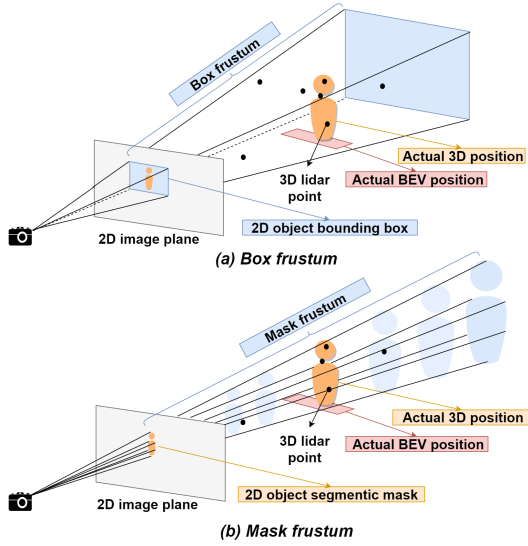


Fig. 4. An illustration of frustum generation. The main difference between box frustum and mask frustum is that box frustum uses the 2D bounding box as the projection source, while mask frustum uses the 2D semantic mask. Mask frustum is expected to be better since it gives the more compact search space alongside the outline of the object, and thus excludes some background noise points.

image \mathbf{I} :

$$\{R_i\} = f_{\text{Mask R-CNN}}(\mathbf{I}) \quad (1)$$

where $f_{\text{Mask R-CNN}}$ represents the Mask R-CNN framework. $R_i = (c_i, \mathbf{b}_i, \mathbf{M}_i, s_i)$ is the instance segmentation result, which is a 4-tuple consisting of class label c_i , 2D bounding box \mathbf{b}_i , 2D semantic mask \mathbf{M}_i , and confidence score s_i for object i .

Frustum generation. We use the 2D results $\{R_i\}$ to generate frustums and to further identify the lidar points that correspond to each object i . With the known transformation \mathbf{T} between the camera and the lidar, we use the semantic mask \mathbf{M}_i for 2D-to-3D projection, as shown in Fig. 4(b). Then the corresponding pointcloud \mathbf{P}'_i can be identified from the raw lidar pointcloud \mathbf{P} based on the frustum:

$$\mathbf{P}'_i = f_{\text{Mask-frustum}}(\mathbf{M}_i, \mathbf{T}, \mathbf{P}) \quad (2)$$

The mask-frustum based projection $f_{\text{Mask-frustum}}$ is our main approach. We believe that using the semantic mask can exclude some noise points that do not belong to the object, e.g., the points from the background. As an alternative, we also tested box-frustum based projection $\mathbf{P}'_i = f_{\text{Box-frustum}}(\mathbf{b}_i, \mathbf{T}, \mathbf{P})$, which is used as a comparison with our main approach.

B. Centroid Estimation

Centroid estimation. With \mathbf{P}'_i obtained from the frustum, we then estimate the 3D centroid (x_i, y_i, z_i) for object i :

$$(x_i, y_i, z_i) = f_{\text{clustering}}(\mathbf{P}'_i) \quad (3)$$

The 3D object centroid plays two key roles in our method. One is to use the depth z_i to determine whether object i should be treated as a faraway object. The other is to further generate the 3D/BEV detection results for faraway objects.

Based on our observation in KITTI dataset, no matter whether the pointcloud in the frustum is dense or sparse, there are always some points on the object's surface. Thus, we adopt a fast clustering technique using histograms to estimate the 3D object centroid.

First, for all points in the pointcloud \mathbf{P}'_i , the histogram of all the coordinate values in each axis is generated (here we have 3 axes x , y , and z). For the histogram of each axis, we define the edges of every bin in the histogram as (e'_j, e''_j) , $\forall j \in \{0, 1, \dots, N\}$, and the count of values belonging to each bin as n_j , $\forall j \in \{0, 1, \dots, N\}$, where N is the number of bins. Then, we identify the bin with the largest count value. This indicates that most of the points are concentrated within this bin. The corresponding index will be obtained by $j^* = \arg \max_j (n_j)$. Finally, the centroid value of an axis, for example, the centroid of x -axis, x_i , can be obtained by $x_i = \frac{1}{2}(e'_{j^*} + e''_{j^*})$. The centroid values y_i and z_i for the other two axes is estimated in the same way.

Faraway judgement. Using the estimated centroid (x_i, y_i, z_i) , we conduct faraway judgement for each object i . We set different faraway thresholds z_{th} for different object classes based on the statistics of the number of ground truth lidar points in each object. As shown in Fig. 6, we first draw a line for the objects that have 10 lidar points, then we approximately select the z_{th} such that most objects of distance larger than z_{th} have less than 10 points. To determine whether object i should be treated as a faraway object, we compare the estimated distance z_i with z_{th} of the corresponding object class c_i . If $z_i > z_{\text{th}}$, then it is a faraway object, otherwise not.

C. Box Regression

To obtain the 3D/BEV bounding box \mathbf{B}_i for object i , based on the estimated object centroid (x_i, y_i, z_i) , we need to estimate the box shape: length l_i , width w_i , height h_i , and the orientation α_i . If object i is a faraway object, directly using learned representations from state-of-the-art models is not a good choice because they do not generalize well from dense pointcloud to very sparse pointcloud. Furthermore, the estimated object centroid (especially the depth) may still be quiet far from the box center. As such, we propose to use a light model named Faraway Frustum Network (FF-Net) only for faraway objects to refine the depth z'_i and regress the shape $(w_i, l_i, h_i, \alpha_i)$ of the 3D bounding box. FF-Net takes the object class c_i and a 2D projection $\mathbf{P}''_i = f_{\text{projection}}(\mathbf{P}'_i, x_i, y_i, z_i)$ of the frustum pointcloud \mathbf{P}'_i whose origin is the estimated centroid (x_i, y_i, z_i) as input, and combines a backbone network (MobileNet [26]) with a multi-output regression head as shown in Fig. 5.

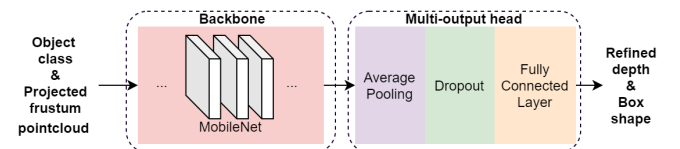


Fig. 5. An illustration of Faraway Frustum Network.

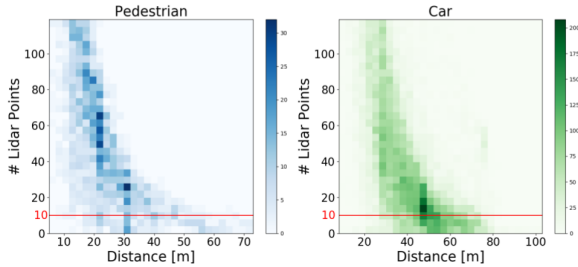


Fig. 6. Distribution of the objects (pedestrians and cars) in the KITTI dataset. As the distance (x-axis) increases, the number of lidar points in an object (y-axis) decreases drastically. This indicates that the pointcloud of each faraway object is very sparse.

The estimated centroid (x_i, y_i, z_i) is considered as the origin of the input projection, and the goal of the FF-net is to shift this origin to the real center of the 3D bounding box. Furthermore, another goal is to regress the box shape, achieved by minimizing the loss of the regressed length, width and height of the box. We use mean absolute error (MAE) to compute the loss $L_x, L_y, L_z, L_w, L_l, L_h, L_\alpha$ of box centroid (x'_i, y'_i, z'_i) and shape $(w_i, l_i, h_i, \alpha_i)$ respectively. By summing these losses, FF-Net is trained and optimized with multi-task losses L_{FF-Net} .

Finally, for a faraway object, we take the shifted depth z'_i and the regressed 3D bounding box shape $(w_i, l_i, h_i, \alpha_i)$ from the output of FF-Net and combine them with (x_i, y_i) from the estimated centroid. We assign a 3D bounding box to the faraway object i as:

$$\mathbf{B}_i = (x_i, y_i, z'_i, \alpha_i, w_i, l_i, h_i). \quad (4)$$

It should be noted that the class id c_i is directly obtained with Mask R-CNN. If object i is not a faraway object, we switch to using learned representations, following SOTA (e.g. Frustum-PointNets [2], PV-RCNN [3]). In this case, 3D bounding box and class id for a non-faraway object are obtained by $\mathbf{B}_i, c_i = f_{\text{SOTA}}(\mathbf{P}, \mathbf{I})$.

IV. EXPERIMENTS

We utilized the KITTI dataset [1] to conduct our experiments. We specifically extracted faraway objects in KITTI and investigated them separately. Details of dataset preparation, evaluation metrics, and implementation are described below.

Dataset preparation. First we analyzed the statistics of the original KITTI dataset by evaluating the distribution of the objects at different distances and having different numbers of lidar points, as shown in Fig. 6. It is obvious that as the distance increases, the number of lidar points in an object decreases. That is to say, the pointcloud is very sparse for faraway objects. We selected the faraway threshold z_{th} for cars as 75 meters and pedestrians as 60 meters. We also split the KITTI dataset into the train set (3724 frames) and the validation set (3757 frames).

Evaluation metric. The major evaluation metric is the mean average precision (mAP) with a given IoU threshold, as suggested by the KITTI dataset. We use both the official

benchmark and a specific benchmark for faraway objects. In the benchmark for faraway objects, we only evaluate faraway objects and we use a specific IoU threshold (0.1) for the mAP. We use low IoU threshold because detecting the object with a small overlap with the ground truth is still helpful at long distances, compared to no detection at all. The mAP results are computed with 11 recall positions which is the same as in previous works.

We also evaluate the faraway objects using average IoU (*aloU*), which is defined as $aloU = \frac{\sum_{i=1}^n IoU}{n}$, where n is the total number of faraway objects and $\sum_{i=1}^n IoU$ is the sum of the IoU values calculated based on the ground truth and the predicted bounding box.

Implementation. Our method uses the instance-level semantic segmentation method (Mask R-CNN [25] pre-trained on COCO dataset [27]) to generate 2D object information from image space. Our first approach (ours1) uses 2D semantic masks to generate frustums in 3D. The second approach (ours2) uses 2D bounding boxes to generate frustums. As a baseline (ours3), we also use ground truth 2D bounding boxes provided by KITTI to generate frustums. All of our approaches are combined with PV-RCNN [3] for non-faraway objects. The Faraway Frustum Network (FF-Net) is trained using the Adam optimizer with early stopping. FF-Net is trained with the whole training set, but during inference only faraway objects are fed to the FF-Net.

We compared our proposed method with the following SOTA 3D/BEV object detectors: SECOND [4], PointPillars [5], PV-RCNN [3], and Frustum PointNets [2]. These SOTA methods are all trained using our data split from scratch and, we evaluated them with the same faraway metrics.

V. RESULTS

Table. I shows the average IoU results for BEV detection of faraway objects in the KITTI validation dataset. All of our methods outperform SOTA methods with higher average IoU (at least 0.051 and at most 0.157). And surprisingly, none of the methods except for ours can achieve an average of 0.1 IoU for both pedestrians and cars. This result not only demonstrates the effectiveness of our method, but also underlines an important shortcoming of SOTA methods. Furthermore, we believe finding the exact shape of faraway objects is not a priority. As long as we obtain the 3D/BEV detection result with even a small IoU (e.g. 0.1), it can still be very useful for certain applications such as automated driving. In other words, a 0.1 IoU detection is better than a false negative. As such, we set IoU threshold to 0.1 for faraway objects in the mAP comparison.

The mAP results of 3D/BEV detection over KITTI validation dataset for pedestrians and cars are shown in Table. II and Table. III, respectively. For the official Easy/Mod/Hard benchmark, our method achieves comparable results with all SOTA methods.

For faraway pedestrians (over 60 meters) in Table. II, our methods (ours1 and ours2) outperform SOTA methods on 3D/BEV detection with large mAP margins (BEV: at least

TABLE I
AVERAGE IOU COMPARISON OF FARAWAY BEV OBJECT DETECTION WITH STATE-OF-THE-ART METHODS

Method / Sub-dataset	SE	PP	PV	FP	Ours1	Ours2	Ours3
KITTI val pedestrian (> 60 meters)	0.036	0.072	0.051	0.000	0.123	0.124	0.221
KITTI val car (> 75 meters)	0.009	0.000	0.018	0.000	0.157	0.150	0.231

* Name explanation: SE (SECOND), PP (PointPillars), PV (PV-RCNN), FP (Frustum PointNets), Ours1 (mask + PV-RCNN), Ours2 (box + PV-RCNN), Ours3 (GT box + PV-RCNN).

** The **bold** result means the best in all methods, and the **blue** result represents the second place.

TABLE II
MAP COMPARISON OF 3D/BEV PEDESTRIAN DETECTION WITH STATE-OF-THE-ART METHODS

Method	BEV Pedestrian mAP on KITTI val				3D Pedestrian mAP on KITTI val			
	IoU threshold 0.5			IoU thr. 0.1	IoU threshold 0.5			IoU thr. 0.1
	Easy	Mod	Hard	Over 60 m	Easy	Mod	Hard	Over 60 m
Frustum PointNets [2]	77.34	77.62	70.68	00.00	74.87	67.94	67.93	00.00
SECOND [4]	72.13	67.65	63.91	13.63	69.23	64.83	61.03	13.63
PointPillars [5]	65.18	58.32	55.92	22.40	59.95	54.44	51.01	22.40
PV-RCNN [3]	73.32	67.42	65.70	19.69	69.53	66.02	62.91	19.69
Ours1 (mask + PV-RCNN)	73.02	68.73	66.87	44.54	71.65	67.29	62.08	44.54
Ours2 (box + PV-RCNN)	73.11	68.73	66.88	45.45	71.74	67.29	62.08	31.95
Ours3 (GT box + PV-RCNN)	73.27	69.67	67.81	72.10	71.90	68.20	62.92	47.65

* The **bold** result means the best in all methods, and the **blue** result represents the second place. We set the experimental IoU threshold as 0.1 for faraway pedestrians because in the current stage, it is extremely difficult to precisely locate faraway objects, while detecting faraway objects even with low IoU is still practical.

TABLE III
MAP COMPARISON OF 3D/BEV CAR DETECTION WITH STATE-OF-THE-ART METHODS

Method	BEV Car mAP on KITTI val				3D Car mAP on KITTI val			
	IoU threshold 0.7			IoU thr. 0.1	IoU threshold 0.7			IoU thr. 0.1
	Easy	Mod	Hard	Over 75 m	Easy	Mod	Hard	Over 75 m
Frustum PointNets [2]	93.45	93.91	86.65	00.00	85.62	79.16	80.60	00.00
SECOND [4]	96.53	93.80	93.80	09.09	95.55	91.34	83.92	09.09
PointPillars [5]	97.52	93.59	93.26	00.00	95.28	82.89	82.46	00.00
PV-RCNN [3]	97.53	94.77	94.78	18.18	96.73	93.18	85.76	18.18
Ours1 (mask + PV-RCNN)	97.54	94.75	94.77	45.27	96.73	93.17	85.76	34.70
Ours2 (box + PV-RCNN)	97.54	94.75	94.77	46.90	96.73	93.17	85.76	46.90
Ours3 (GT box + PV-RCNN)	97.54	94.71	94.73	69.94	96.73	93.13	85.72	61.00

* The **bold** result means the best in all methods, and the **blue** result represents the second place. We set the experimental IoU threshold as 0.1 for faraway cars because in the current stage, it is extremely difficult to precisely locate faraway objects, while detecting faraway objects even with low IoU is still practical.

22.14% and at most 45.45%, 3D: at least 9.55% and at most 44.54%).

For faraway cars (over 75 meters) in Table. III, our methods (ours1 and ours2) outperform SOTA methods again with a higher mAP (BEV: at least 27.09% and at most 46.90%, 3D: at least 16.52% and at most 46.90%).

All the above results demonstrate that our method is better for faraway object detection. It should also be noted that the baseline method (ours3) using ground truth 2D boxes has the best results in both pedestrian and car detection. This indicates that the performance of our method can be further optimized with an improved 2D object detector.

VI. CONCLUSION

In this paper, we proposed an alternative 3D/BEV detector, named *Faraway-Frustum*, to deal with lidar sparsity of faraway objects. Our method takes the advantages of

relatively dense image data to find faraway objects, and circumvents the disadvantages of pointcloud-driven neural networks working on very sparse points. Moreover, our alternative detector can be flexibly combined with a state-of-the-art method to form an overall 3D/BEV object detection system via setting faraway thresholds.

The experiments demonstrated the feasibility of our approach, but they also exposed a significant shortcoming of state-of-the-art object detection methods: Relying on learned representations of very sparse lidar points to detect faraway objects is not a good strategy.

ACKNOWLEDGMENT

Material reported here was supported by the United States Department of Transportation under Award Number 69A3551747111 for the Mobility21 University Transportation Center.

REFERENCES

- [1] A. Geiger, P. Lenz, and R. Urtasun, "Are we ready for autonomous driving? the kitti vision benchmark suite," in *Proceedings of the IEEE/CVF Conference on Computer Vision and Pattern Recognition*, 2012, pp. 3354–3361.
- [2] C. R. Qi, W. Liu, C. Wu, H. Su, and L. J. Guibas, "Frustum pointnets for 3d object detection from rgb-d data," in *Proceedings of the IEEE/CVF Conference on Computer Vision and Pattern Recognition*, 2018, pp. 918–927.
- [3] S. Shi, C. Guo, L. Jiang, Z. Wang, J. Shi, X. Wang, and H. Li, "Pv-rnn: Point-voxel feature set abstraction for 3d object detection," in *Proceedings of the IEEE/CVF Conference on Computer Vision and Pattern Recognition*, 2020, pp. 10 529–10 538.
- [4] Y. Yan, Y. Mao, and B. Li, "Second: Sparsely embedded convolutional detection," *Sensors*, vol. 18, no. 10, p. 3337, 2018.
- [5] A. H. Lang, S. Vora, H. Caesar, L. Zhou, J. Yang, and O. Beijbom, "Pointpillars: Fast encoders for object detection from point clouds," in *Proceedings of the IEEE/CVF Conference on Computer Vision and Pattern Recognition*, 2019, pp. 12 697–12 705.
- [6] Z. Liu, X. Zhao, T. Huang, R. Hu, Y. Zhou, and X. Bai, "Tanet: Robust 3d object detection from point clouds with triple attention." in *AAAI*, 2020, pp. 11 677–11 684.
- [7] Z. Yang, Y. Sun, S. Liu, and J. Jia, "3dssd: Point-based 3d single stage object detector," in *Proceedings of the IEEE/CVF Conference on Computer Vision and Pattern Recognition*, 2020, pp. 11 040–11 048.
- [8] Z. Deng and L. Jan Latecki, "Amodal detection of 3d objects: Inferring 3d bounding boxes from 2d ones in rgb-depth images," in *Proceedings of the IEEE/CVF Conference on Computer Vision and Pattern Recognition*, 2017, pp. 5762–5770.
- [9] X. Chen, H. Ma, J. Wan, B. Li, and T. Xia, "Multi-view 3d object detection network for autonomous driving," in *Proceedings of the IEEE/CVF Conference on Computer Vision and Pattern Recognition*, 2017, pp. 1907–1915.
- [10] J. Ku, M. Mozifian, J. Lee, A. Harakeh, and S. L. Waslander, "Joint 3d proposal generation and object detection from view aggregation," in *2018 IEEE/RSJ International Conference on Intelligent Robots and Systems (IROS)*, 2018, pp. 1–8.
- [11] S. Song and J. Xiao, "Deep sliding shapes for amodal 3d object detection in rgb-d images," in *Proceedings of the IEEE/CVF Conference on Computer Vision and Pattern Recognition*, 2016, pp. 808–816.
- [12] Z. Wang and K. Jia, "Frustum convnet: Sliding frustums to aggregate local point-wise features for amodal," in *2019 IEEE/RSJ International Conference on Intelligent Robots and Systems (IROS)*, 2019, pp. 1742–1749.
- [13] M. Ye, S. Xu, and T. Cao, "Hvnet: Hybrid voxel network for lidar based 3d object detection," in *Proceedings of the IEEE/CVF Conference on Computer Vision and Pattern Recognition*, 2020, pp. 1631–1640.
- [14] C. R. Qi, H. Su, K. Mo, and L. J. Guibas, "Pointnet: Deep learning on point sets for 3d classification and segmentation," in *Proceedings of the IEEE conference on computer vision and pattern recognition*, 2017, pp. 652–660.
- [15] S. Shi, X. Wang, and H. Li, "Pointretnn: 3d object proposal generation and detection from point cloud," in *Proceedings of the IEEE Conference on Computer Vision and Pattern Recognition*, 2019, pp. 770–779.
- [16] Z. Yang, Y. Sun, S. Liu, X. Shen, and J. Jia, "Std: Sparse-to-dense 3d object detector for point cloud," in *Proceedings of the IEEE international conference on computer vision*, 2017, pp. 1951–1960.
- [17] V. A. Sindagi, Y. Zhou, and O. Tuzel, "Mvx-net: Multimodal voxelnet for 3d object detection," in *2019 International Conference on Robotics and Automation (ICRA)*. IEEE, 2019, pp. 7276–7282.
- [18] S. Vora, A. H. Lang, B. Helou, and O. Beijbom, "Pointpainting: Sequential fusion for 3d object detection," in *Proceedings of the IEEE/CVF Conference on Computer Vision and Pattern Recognition*, 2020, pp. 4604–4612.
- [19] X. Du, M. H. Ang, S. Karaman, and D. Rus, "A general pipeline for 3d detection of vehicles," in *2018 IEEE International Conference on Robotics and Automation (ICRA)*. IEEE, 2018, pp. 3194–3200.
- [20] K. Shin, Y. P. Kwon, and M. Tomizuka, "Roarnet: A robust 3d object detection based on region approximation refinement," in *2019 IEEE Intelligent Vehicles Symposium (IV)*. IEEE, 2019, pp. 2510–2515.
- [21] X. Shen and I. Stamos, "Frustum voxnet for 3d object detection from rgb-d or depth images," in *The IEEE Winter Conference on Applications of Computer Vision*, 2020, pp. 1698–1706.
- [22] X. Zhao, Z. Liu, R. Hu, and K. Huang, "3d object detection using scale invariant and feature reweighting networks," in *Proceedings of the AAAI Conference on Artificial Intelligence*, vol. 33, 2019, pp. 9267–9274.
- [23] P. Cao, H. Chen, Y. Zhang, and G. Wang, "Multi-view frustum pointnet for object detection in autonomous driving," in *2019 IEEE International Conference on Image Processing (ICIP)*. IEEE, 2019, pp. 3896–3899.
- [24] M. Fürst, O. Wasenmüller, and D. Stricker, "Lrpd: Long range 3d pedestrian detection leveraging specific strengths of lidar and rgb," *arXiv preprint arXiv:2006.09738*, 2020.
- [25] K. He, G. Gkioxari, P. Dollár, and R. Girshick, "Mask r-cnn," in *Proceedings of the IEEE international conference on computer vision*, 2017, pp. 2961–2969.
- [26] A. G. Howard, M. Zhu, B. Chen, D. Kalenichenko, W. Wang, T. Weyand, M. Andreetto, and H. Adam, "Mobilenets: Efficient convolutional neural networks for mobile vision applications," *arXiv preprint arXiv:1704.04861*, 2017.
- [27] T.-Y. Lin, M. Maire, S. Belongie, J. Hays, P. Perona, D. Ramanan, P. Dollár, and C. L. Zitnick, "Microsoft coco: Common objects in context," in *European conference on computer vision*. Springer, 2014, pp. 740–755.